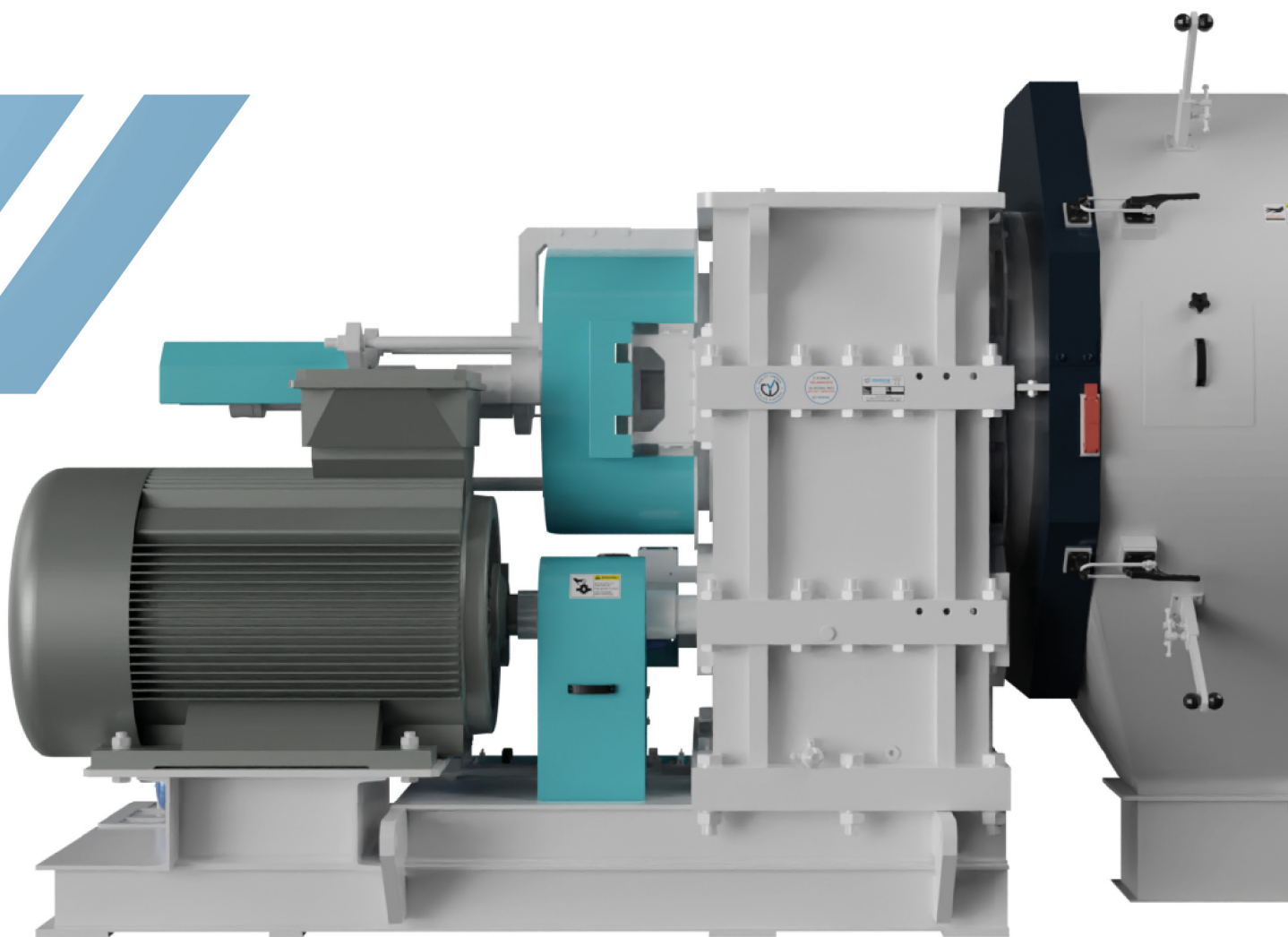


PLATINUM Series Gear Driven Pellet Mill

BIGGER
STRONGER
MORE EFFICIENT







PLATINUM PT 1200

GEAR-DRIVEN PELLET MILL

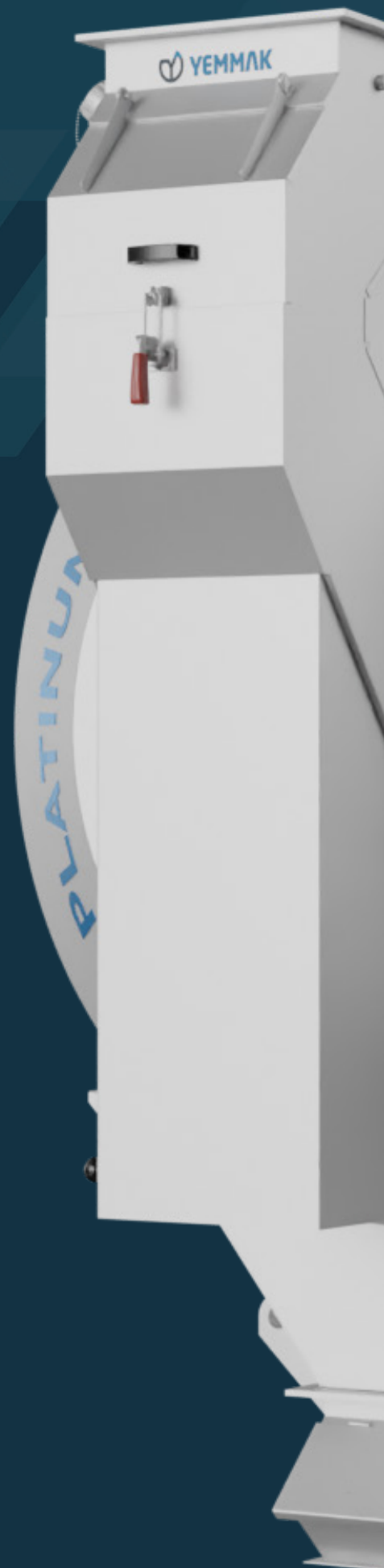
PLATINUM Series PT 1200 Gear-Driven Pellet Mill
is the result of Yemmak's more than 55 years of
knowledge and expertise in process engineering.

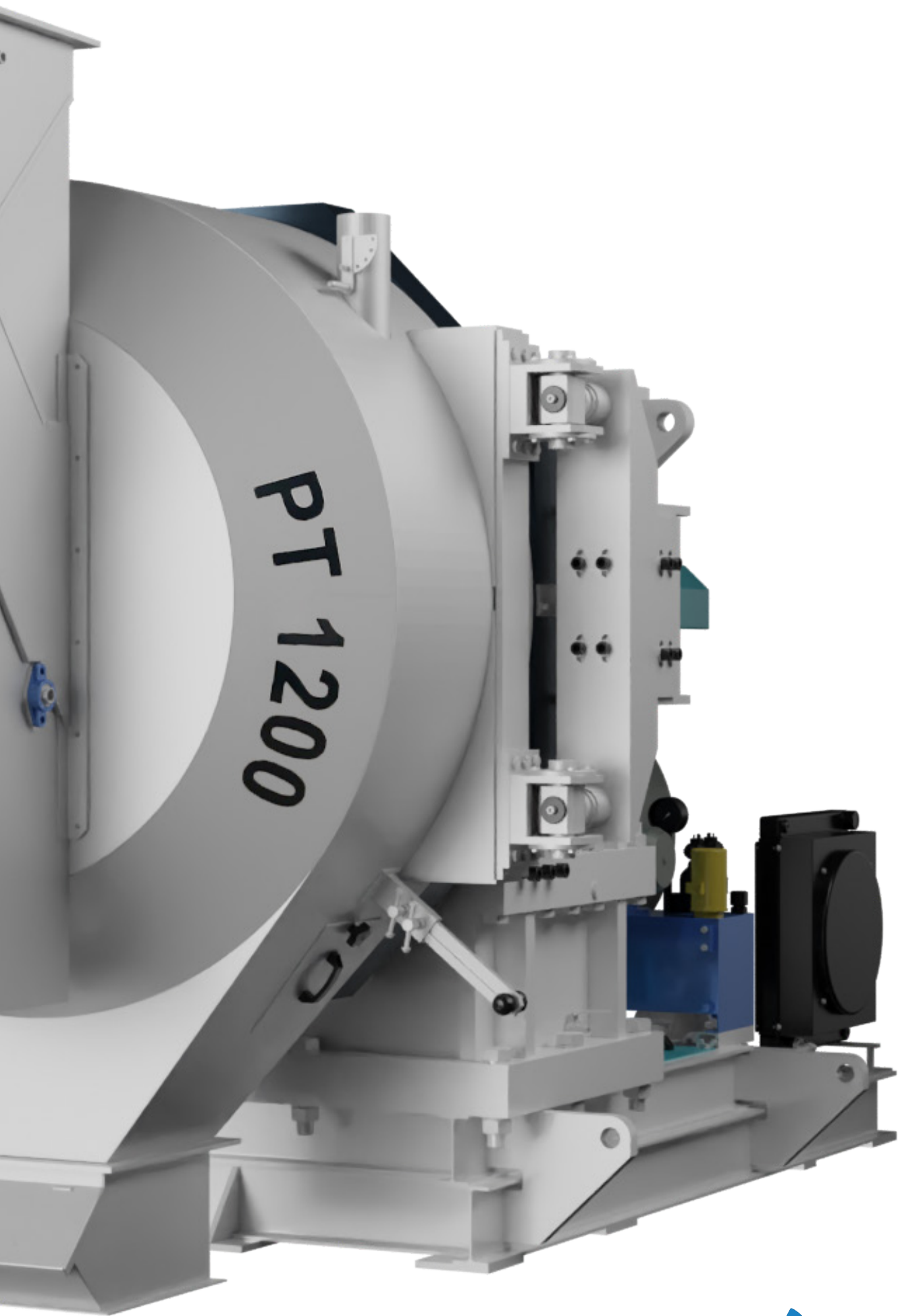


DESIGNED FOR EFFICIENCY

PT 1200 has a high production capacity, an impressive pelleting performance of up to **45 metric ton/hour** as well as improved pelleting dynamics and a user-friendly design.

Showcasing a wholly new design, the Platinum series optimizes the pelleting process.





Larger Effective Pelleting Area

With three rollers with a diameter of 454 mm, the capacity increases in proportion to the higher active pelleting area.

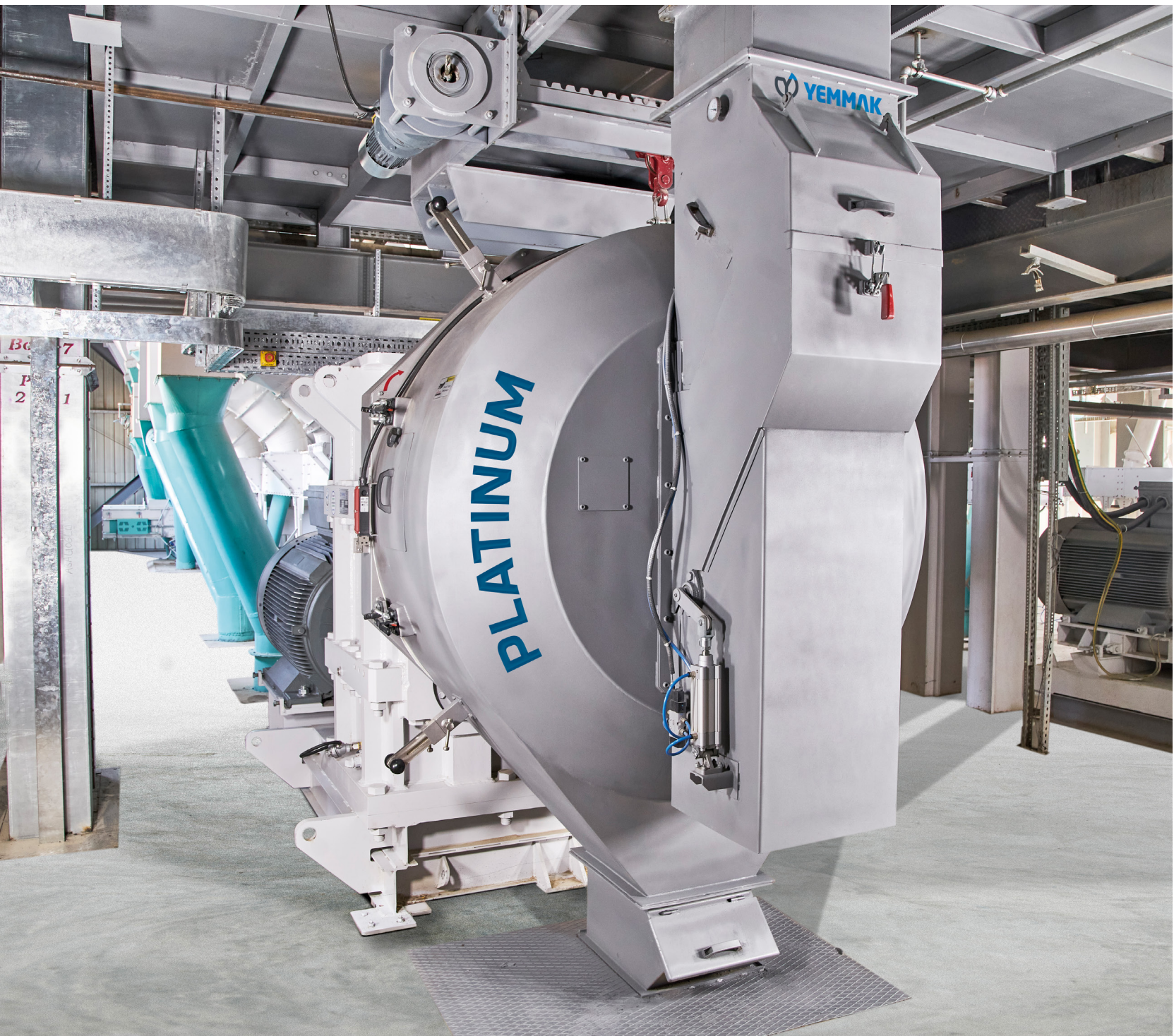
Higher Engine Power

The engine is paired with a specially designed two-stage gear set that helps transmit its power to the machine efficiently. This gear set has been designed to withstand the high torques generated by the operation of the machine and to keep the mill running smoothly.



12–15% Capacity Increase

The most important advantage of the **new Platinum Series Gear-Driven Pellet Mills** is the **12–15 percent** (up to 20 percent in some cases) **capacity increase** for higher energy efficiency and the same amount of consumption.



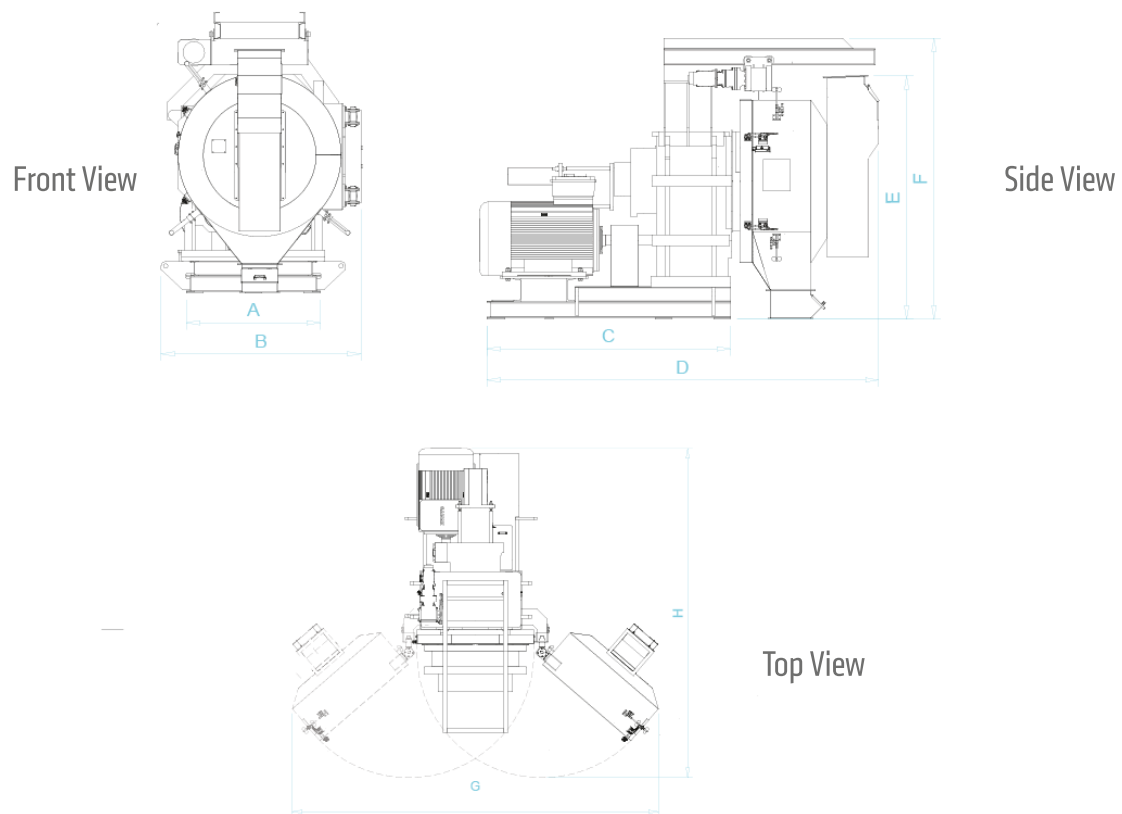
GEARBOX TECHNOLOGY



The **gearbox technology** allows the **Platinum** series pellet mills to increase their power transmission **efficiency to 97–98** percent and enjoy enhanced capacities compared to their equivalents with belt-pulley power transmission systems. The two-stage precision gear set guarantees the highest efficiency and capacity.

Additionally, its optimized gear ratio maximizes pellet quality (pellet durability index, PDI).

TECHNICAL SPECIFICATIONS

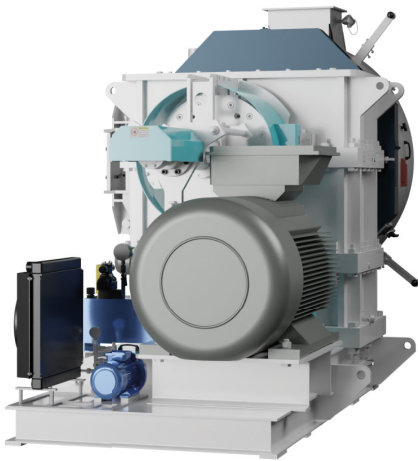


MODEL		DIMENSIONS(mm)								MOTOR (kW)	DIE		ROLLER		CAPACITY (TON/H)
		A	B	C	D	E	F	G	H	POWER (kW)	DIAMETER (mm)	WIDTH (mm)	PIECE	DIAMETER (mm)	
PT 1200	1144/324**	1480	2210	2700	4350	2700	3115	5660	5090	500 kW	1144	324	3	454	MAX. 40*
PT 1200	1144/398**	1480	2210	2700	4350	2874	3115	5800	5200	565 kW	1144	398	3	454	MAX. 50*



Features

- Precise, custom-made gears
- Imported die and rollers with a German patent
- Vacuum-hardened stainless steel die
- Surface-hardened trine roller set
- Four-way rotary union
- Double-walled, adjustable main door
- Foldable deflector
- Safety pin mechanism



Integrated Accessories

- Flow chute magnetic filter
- Pneumatic flow control valve
- Crane System
- Oil cooling system
- Safety and control sensors
- Distribution board

Options

- Automatic roller gap adjustment system (incl. linear positioning sensor)
- Centralized lubrication system
- Motor power range from 355 kW up to 560 kW
- Direct coupled slow rotation mechanism

